

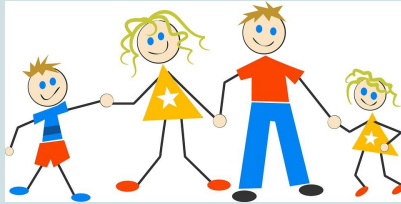
Cumberland School Department

Integrated Preschool

Program

At

Ashton School



Where Children of all Abilities
Learn Together

Program Philosophy

The Cumberland School Department's Early Childhood Program is based on the belief that the first years in a child's life are the most crucial to his/her development. Research has shown that early concepts, attitudes, and skills acquired by a child positively impacts later development.

At the Cumberland Preschool Program, we understand the importance of offering a developmentally appropriate curriculum allowing children of all **abilities** to learn through play using safe, developmentally appropriate and challenging materials and equipment.

Our team of experts implements a high-quality curriculum aligned with the Rhode Island Early Learning and Development Standards focused on Physical Health and Motor Development, Social and Emotional Development, Literacy, Language Development, Cognitive Development, mathematics, Science, Social Studies, and Creative Arts.

Our program exposes children to secure, consistent relationships with responsive adults and provides ample opportunities for positive interactions with peers as the foundation for socio-emotional health and academic success.

We implement a child-centered system of authentic assessment aligned with the Rhode Island Early Learning and Development Standards to track, support, and optimize each child's academic, physical, and socio-emotional growth. Program-wide strategies ensure differentiated teaching and learning experiences that meet each child's developmental levels, learning styles and interests.

A typical Preschool Day

Group Time - Students greet each other and their teachers. Children are introduced to new stories, songs, games, and poems in this setting. On the first day of each week, the teaching staff familiarizes the children with the center activities.

Center Time - Children learn through play in centers that have been thoughtfully developed by classroom teachers and paraprofessionals. Children are allowed to learn, create, invent, and interact with peers each day.



Snack and Sharing Time - Children and adults sit down together to have a snack and discuss current events. Families are encouraged to send in a healthy snack. Milk can be purchased for a fee.

Outdoor Play/Movement - Weather permitting, children are taken outside to address standards related to Physical Health and Motor Development.

Classroom size

Our maximum classroom size is 15 children. There is a ratio of eight typically developing students (or peer models) to seven children with special needs.

Staffing

All our teachers are certified Early Childhood Special Educators and meet the Rhode Island Department of Education's criteria for highly qualified status. Each classroom has a certified teacher assistant. In addition, our speech therapists, occupational therapist and physical therapist provide integrated supports to our children with special needs. We also have an onsite school nurse.



Sessions

We offer morning and afternoon sessions:

- For **three-year olds**: morning session from 9:40 to 12:00; Monday through Thursday.
- For **four year olds**: afternoon session from 1:10-3:40; Monday through Friday.



Anticipated tuition
2020-2021 school year

- Three-year olds (4 sessions/week):
 - \$225.00 per month
- Four-year olds (5 sessions/week):
 - \$265.00 per month

Transportation must be provided by you, for drop-off and pick-up.

You will be automatically billed by the school department's business office following acceptance into our program. A terms of agreement form must be signed prior to starting school.

Registration for typically developing children

Please call us at 658-1600 x404 if you would like to start the application process or when you have any questions.

Admission is lottery-based when the number of applications exceeds available slots.

We offer open enrollment throughout the school year when we have open slots.

Children must be toilet trained.



For more information, contact:

September - June

Cumberland School Department
Cumberland Preschool Center

Nellie Normand - Early Childhood Coordinator
130 Scott Road
Cumberland RI 02864
401-658-1600 x404

nellie.normand@cumberlandschools.org

July - August

Cumberland School Department
Special Services Office
2602 Mendon Road
Cumberland RI 02864
401-658-1600 x4